

AI in Education

Agenda

- 1 Introduction to AI in Education
- 2 Historical Context of AI in Education
- 3 Current Applications of AI in Education
- 4 AI and Data Analysis in Education
- 5 Benefits of AI in the Classroom
- 6 Challenges and Limitations of AI in Education
- 7 Future Trends in AI in Education
- 8 Role of Educators in an AI-Enhanced Environment
- 9 Case Studies: Successful Implementation of AI Solutions
- 10 AI-Powered Learning Resources and Tools
- 11 Policy and Regulatory Considerations
- 12 Conclusion and Next Steps

Introduction to AI in Education

Defining the Role of AI in Modern Learning

- **Understanding AI:** Artificial Intelligence encompasses a variety of technologies that enable machines to perform tasks that traditionally require human intelligence, including reasoning, learning, and problem-solving.
- **Significance for Education:** AI's importance in education lies in its capacity to enhance teaching methodologies, provide tailored learning experiences, and assist educators in delivering more effective instruction.
- **Goals of the Presentation:** This presentation aims to outline the transformative power of AI in education, highlighting its historical evolution, current applications, benefits, challenges, and future trends.



Photo by CHUTERSNAP on Unsplash

Historical Context of AI in Education

Tracing the Evolution of AI Technologies in Learning



Initial AI Endeavors in Education

The journey of AI in education began with simple programming and early intelligent systems designed to facilitate basic learning and administrative tasks.



Key Milestones in AI Development

Significant milestones include the creation of expert systems in the 1980s and the advent of intelligent tutoring systems that act as personalized instructional aids.



Shifts in Educational Paradigms

The evolution of educational methods has paralleled advancements in AI, moving from traditional instruction to more interactive, student-centered approaches driven by data.

Current Applications of AI in Education

Harnessing AI for Enhanced Learning Experiences

- **Personalized Learning Tools:** AI algorithms analyze individual student's strengths and weaknesses, customizing educational content to meet their unique needs and learning pace.
- **Adaptive Learning Systems:** These systems modify instructional paths based on real-time data, letting learners navigate their educational journey through tailored support and challenges.
- **AI Tutoring Solutions:** Intelligent tutoring systems provide 24/7 assistance, facilitating problem-solving, instant feedback, and fostering an engaging learning environment.

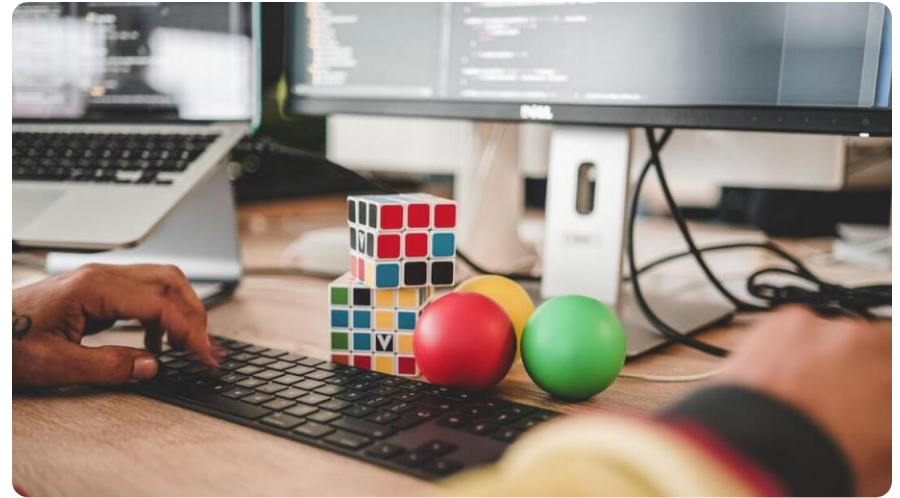


Photo by Zan on Unsplash

AI and Data Analysis in Education

Utilizing Data to Enhance Learning and Outcomes

- **Analyzing Student Performance:** AI tools efficiently analyze vast amounts of student data, offering insights that educators can use to improve instructional techniques and targeted interventions.
- **Predictive Models for Learning Outcomes:** Predictive analytics utilizes historical data to forecast student success, enabling institutions to allocate resources effectively and identify at-risk learners.
- **Systems for Learning Outcomes Assessment:** AI-powered assessment tools automatically evaluate students' understanding and competencies, facilitating a more nuanced approach to grading and feedback.



Photo by Adeolu Eletu on Unsplash

Benefits of AI in the Classroom

Enhancing Educational Experiences Through Technology



Enhanced Learning Experiences

AI fosters interactivity, making lessons more engaging through targeted content and immersive educational technologies.



Improved Accessibility for All Learners

AI tools can cater to diverse needs, ensuring that education is inclusive and accessible to students with varying abilities and learning styles.



Increasing Engagement and Retention

Personalized experiences foster deeper connections with the learning material, leading to enhanced retention and motivation.

Challenges and Limitations of AI in Education

Navigating the Hurdles of Implementation



Data Privacy Concerns

The utilization of student data raises significant privacy issues, necessitating comprehensive policies to safeguard sensitive information.



Ethical Implications of AI Use

Questions surrounding bias in AI algorithms and their impact on student opportunities highlight the need for ethical governance in educational AI.



Resistance to Technology Integration

Some educators and institutions may resist adopting AI tools due to apprehension about changing traditional teaching methods and fear of job displacement.

Future Trends in AI in Education

Innovative Directions for Incorporating AI

- **Emerging Technological Integrations:** New AI developments are being integrated with other technologies, such as augmented and virtual reality, to create immersive educational environments.
- **AI and Virtual Reality Synergy:** This combination allows for experiential learning opportunities, enabling students to virtually explore complex subjects through interactive simulations.
- **Lifelong Learning Platforms :** AI-driven platforms are emerging, promoting continuous education, professional development, and reskilling opportunities throughout one's career.



Photo by XR Expo on Unsplash

Role of Educators in an AI-Enhanced Environment

Reimagining Teaching in the AI Age

- **Evolution of the Teacher's Role:** Educators transition from sole knowledge providers to facilitators of learning, leveraging AI tools to enhance student engagement and understanding.
- **Professional Development Adaptations:** Continuous training and skill development will be essential for educators to effectively integrate AI into their teaching practices.
- **Collaboration with AI Tools:** Teachers must learn to harness AI's capabilities, working alongside these technologies to augment student learning experiences.



Photo by Marília Castelli on Unsplash

Case Studies: Successful Implementation of AI Solutions

Real-World Impact of AI in Education

- **Examples from Leading Institutions:** Several universities and schools have successfully adopted AI technologies, demonstrating substantial improvements in personalized education and learning outcomes.
- **Measurable Outcomes and Impact:** Quantifiable results from AI interventions include improved student engagement levels, increased retention rates, and enhanced academic performance.
- **Best Practices in AI Application:** Identifying key strategies employed by institutions to effectively integrate AI and align solutions with educational goals leads to system-wide improvements.



Photo by Emre on Unsplash

AI-Powered Learning Resources and Tools

Innovative Solutions for Modern Education

- **Intelligent Learning Management Systems:** AI-integrated platforms streamline course management, offering personalized recommendations based on individual student performance and behavior.
- **Intelligent Tutoring Machines:** These systems engage students with tailored instruction, immediate feedback, and adaptive challenges to enrich their learning.
- **AI-Driven Assessment Tools:** Automated grading and assessments enhance efficiency while allowing for personalized feedback and tracking of student progress.

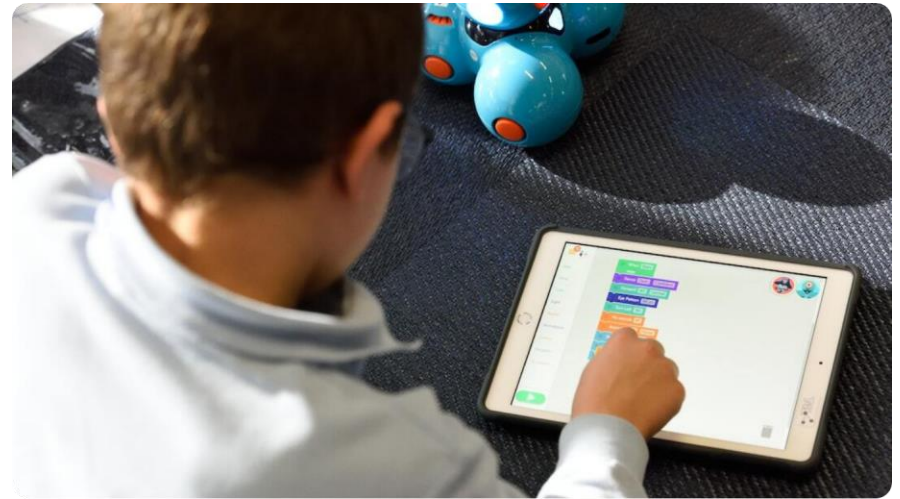


Photo by stem.T4L on Unsplash

Policy and Regulatory Considerations

Frameworks for Responsible AI Use in Education



Governing AI Utilization

As AI technology expands in education, robust policies will be essential to regulate its implementation and ensure equitable access.



Ensuring Inclusivity and Equity

Regulatory frameworks must prioritize diversity, prohibiting biases in AI algorithms to support all students, regardless of background or ability.



Responsible AI Frameworks

Creating guidelines for transparent AI use in classrooms will facilitate trust and accountability between educators, students, and parents.

Conclusion and Next Steps

Charting a Path Forward in AI Education